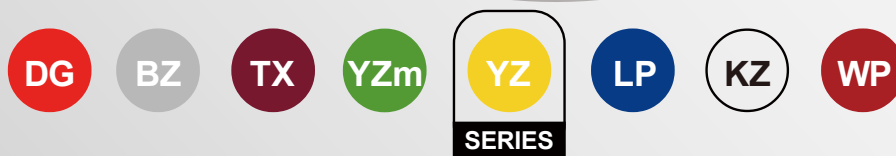


YZ15S series

PRODUCT
DESCRIPTION

YZ peristaltic pump series



YZ15S-1/YZ15S-2

Easy-to-use peristaltic pump head

PRODUCT DESCRIPTION

Used in dental implanters, fermenters, supporting analytical instruments, packaging of diagnostic reagents, etc.

Max flow | YZ15S-1:380mL/min
YZ15S-2:185mL/min/Channels

Max speed: 300rpm



YZ15S series easy-to-use pump head

YZ15S series easy-to-use peristaltic pump head, small and beautiful in appearance. The shell is made of special engineering plastics, which improves the service life of the pump head. It can be matched with various types of hoses and motors, and supports OEM customization.

Specialize in small traffic

Stable flow rate and superior performance

Single/dual channel optional

Single/dual channel options available

Easy hose loading and unloading

Adaptive tube clip design for better adaptation to hose assembly



Small and beautiful

Small size, compact structure design

Knob switch design

Easy opening and closing for convenient tube loading

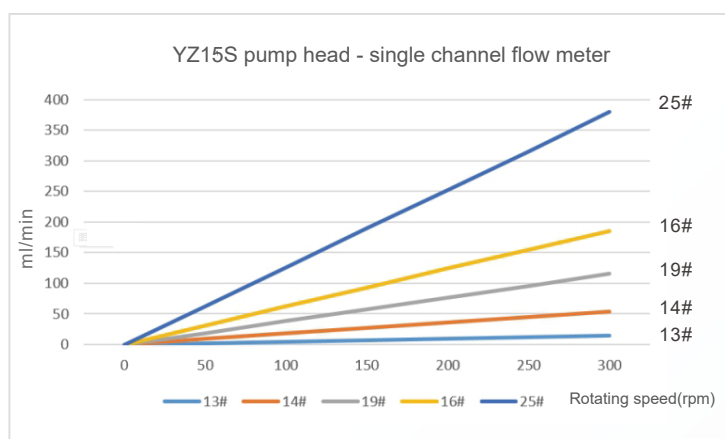
Supporting various types of hoses and motors

Meet more needs of customers

Pump head parameter table

Note: This series of pump head 42 DC motor is not suitable for PharMed BPT tube type

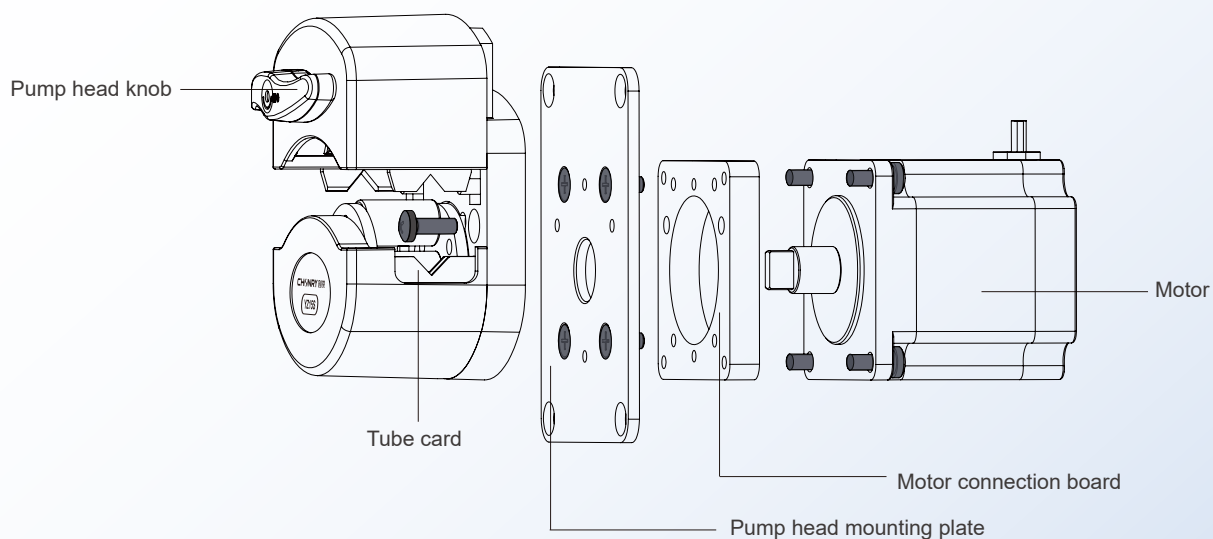
Pump Head	Channels	Rollers	Max Speed (rpm)	Hose Specifications (Id* Wall Thickness)mm	Fax Flow (mL/min)
YZ15S-1	1	3	300	13# / 0.8X1.6	380
				14# / 1.6X1.6	
				19# / 2.4X1.6	
				16# / 3.1X1.6	
				25# / 4.8X1.6	
YZ15S-2	2	3	300	13# / 0.8X1.6	185/channels
				14# / 1.6X1.6	
				19# / 2.4X1.6	
				16# / 3.1X1.6	



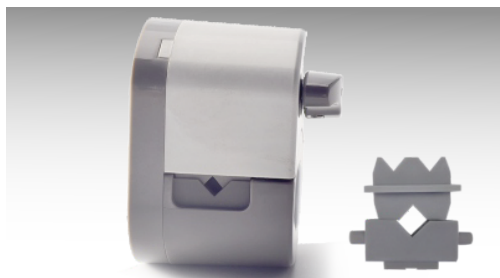
Note: The test environment for flow data is normal temperature and pressure, and the test fluid is water. The values are for reference only, please refer to the actual situation.

Schematic diagram of structure and function

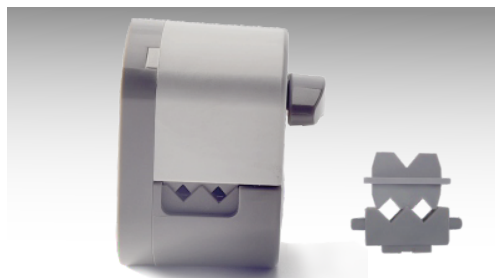
Pump head → Pump head mounting plate → Motor connection board → Matching motor



Single and dual channel optional



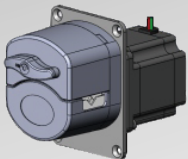
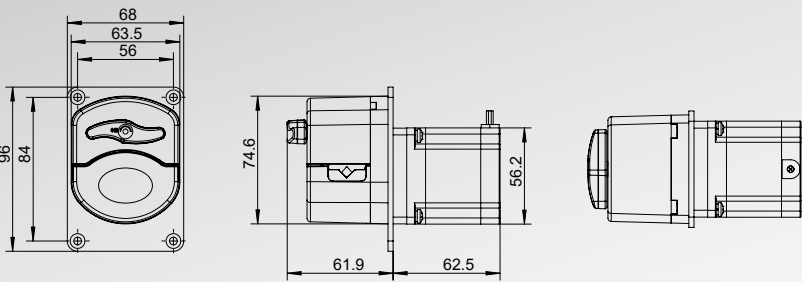
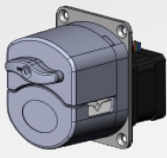
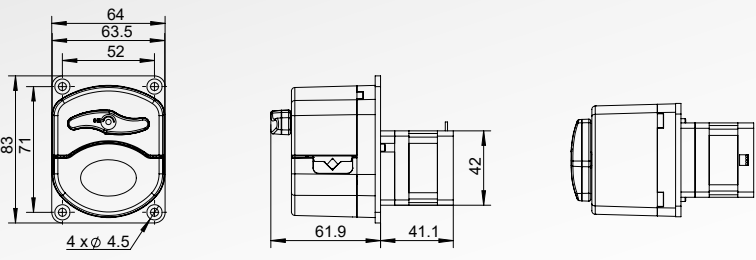
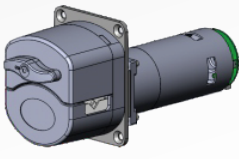
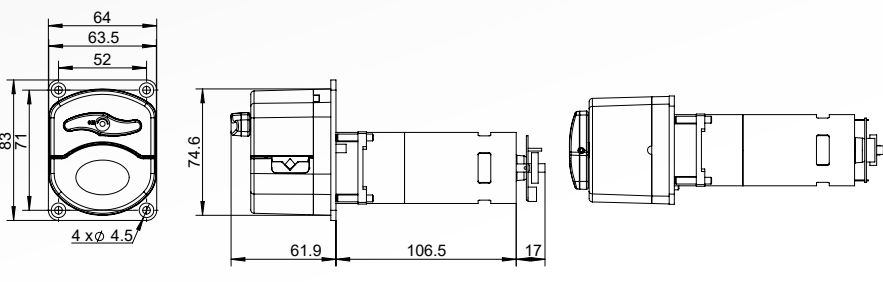
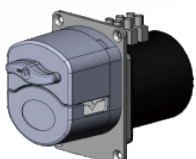
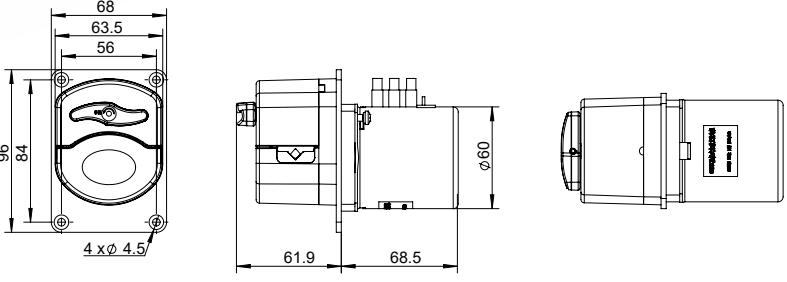
YZ15S-1 single channel display



YZ15S-2 dual channel display

Dimensions

Note: A variety of motor matching schemes can be used for practical application selection.

<p>UCP315-A2 (Max flow 380mL/min)</p> 	 <p>Technical drawing of UCP315-A2 pump showing front, side, and top views with dimensions: 68, 63.5, 56, 96, 84, 74.6, 61.9, 62.5, 56.2.</p>
<p>UCP315-A1 (Max flow 380mL/min)</p> 	 <p>Technical drawing of UCP315-A1 pump showing front, side, and top views with dimensions: 64, 63.5, 52, 83, 71, 42, 61.9, 41.1, 4 x ϕ 4.5.</p>
<p>OEM215 (Max flow 380mL/min)</p> 	 <p>Technical drawing of OEM215 pump showing front, side, and top views with dimensions: 64, 63.5, 52, 83, 71, 74.6, 61.9, 106.5, 17, 4 x ϕ 4.5.</p>
<p>ACM115 (Max flow 126mL/min)</p> 	 <p>Technical drawing of ACM115 pump showing front, side, and top views with dimensions: 68, 63.5, 56, 96, 84, 61.9, 68.5, ϕ 60, 4 x ϕ 4.5.</p>

(Unit: mm)

Hose Installation Diagram

- Only touch the inner wall of the hose during fluid transfer, high hygiene level
- Compact structure design, stable transmission performance



Display before installation

- Rotate the switch knob 180° counterclockwise
- Open the upper pressure block and install the adapter hose



Display after installation

- Rotate 180° clockwise and press down to close the upper pressure block

CHONRY 创锐

Baoding Chuangrui Precision Pump Co.,Ltd.

Address: NO.369 of HuiYang Street , Baoding 071000 , Hebei , China

Mobile: +86 15633705132

Website: <http://www.crpump.com>

Email: support@crpump.com

